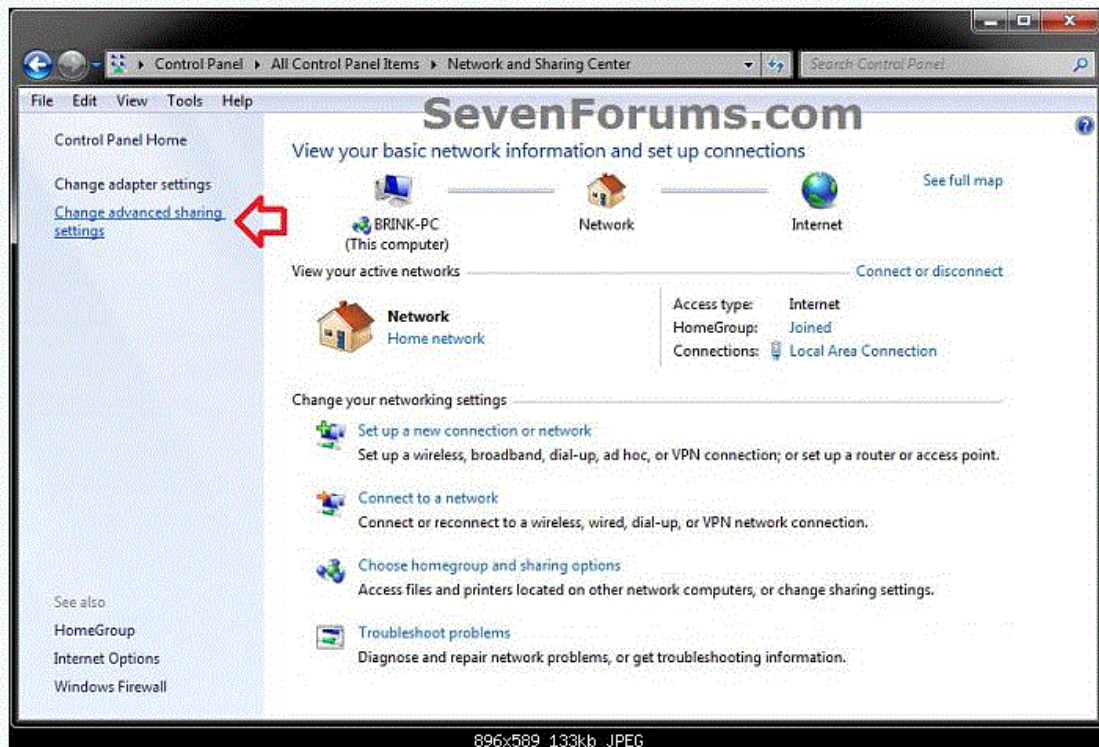



How to turn Share Password Protection on or off.

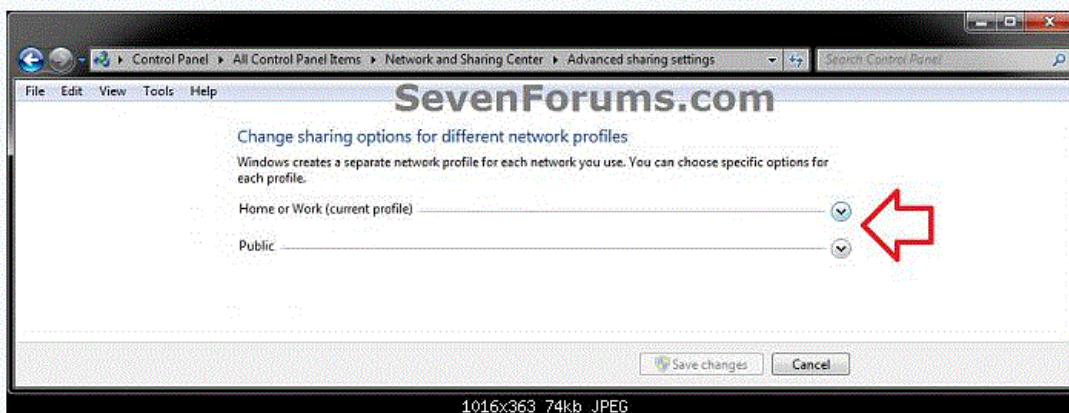
Here's How:

1. Open the **Control Panel (icons view)**, and click on the **Network and Sharing Center** icon.
2. In the left pane, click on the **Change advanced sharing settings** link. (see screenshot below)



3. Click on the  to expand the network profile (type) that you want to turn password protected sharing on or off for. (see screenshot below)

NOTE: Normally this would be your **current profile**.



4. **To Turn On Password Protected Sharing**

NOTE: This is the default setting.

5. To Turn Off Password Protected Sharing

A) Select (dot) **Turn off password protected sharing**. (see screenshot below step 6)

6. Click on the **Save Changes** button. (see screenshot below)



7. If prompted by UAC, then click on **Yes**.

8. When finished, you can close the Network and Sharing Center.