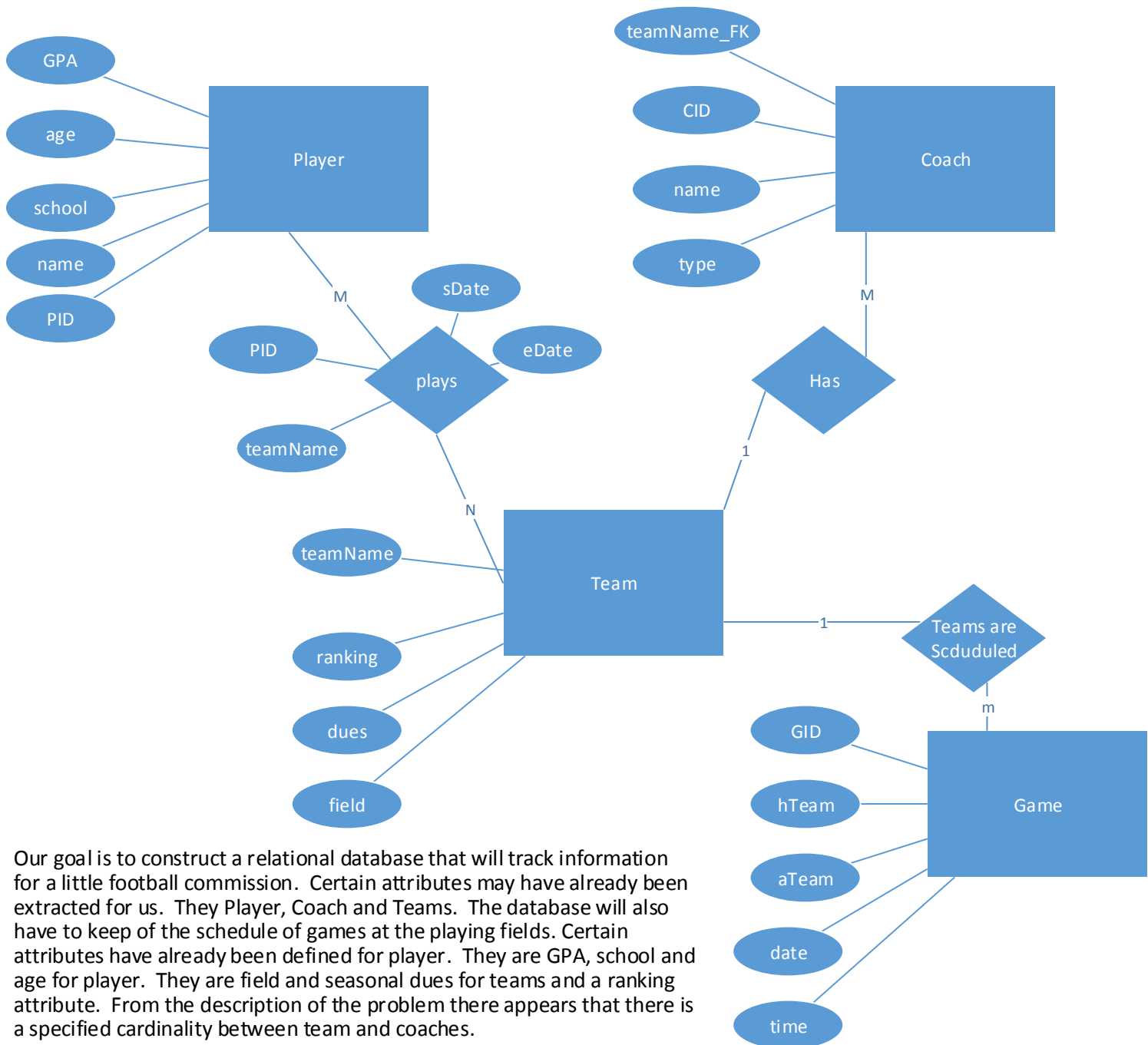


Craig Nelson Chen ER Diagramming Model
Little League Commission



Our goal is to construct a relational database that will track information for a little football commission. Certain attributes may have already been extracted for us. They Player, Coach and Teams. The database will also have to keep of the schedule of games at the playing fields. Certain attributes have already been defined for player. They are GPA, school and age for player. They are field and seasonal dues for teams and a ranking attribute. From the description of the problem there appears that there is a specified cardinality between team and coaches.